

GROS GIBIERS

Triés par marques

30-40 mètres

Taille réelle des zones «tué» :



L Ext = 360 mm
L Int = 275 mm

H Ext = 225mm
H Int = 180 mm



Ø Ext = 300 mm
Ø Int = 225 mm

La surface du blessé doit être supérieure à 2828 cm²

ACTILIA



Antilope



Biche



Biche



Biche



Bison



Bison



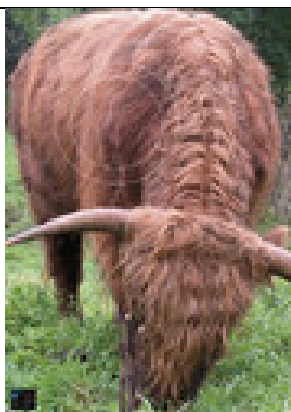
Bison



Bison



Bœuf Highlands



Bœuf des Highlands



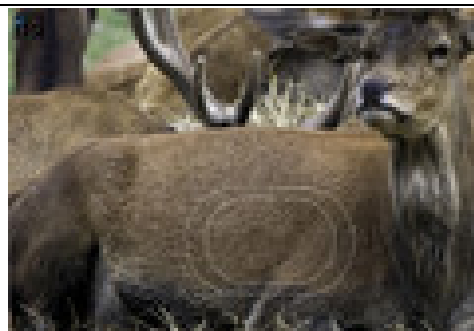
Bœuf Watussi



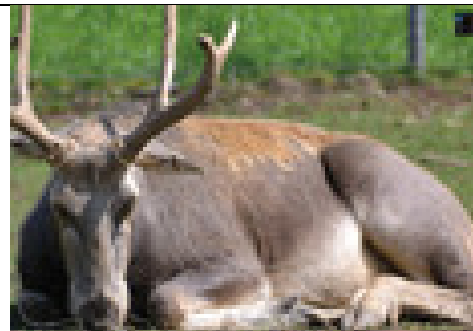
Cerf



Cerf



Cerf



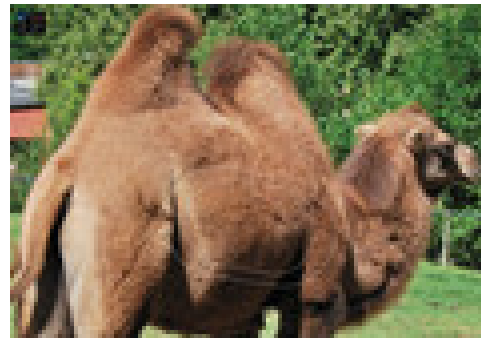
Cerf du Père David



Chameau



Chameau



Chameau



Cheval de Przelawski



Elan du cap



Eléphant



Eléphant



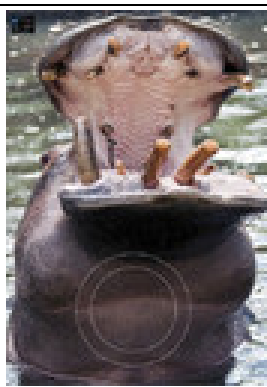
Eléphant



Gnou



Gorille



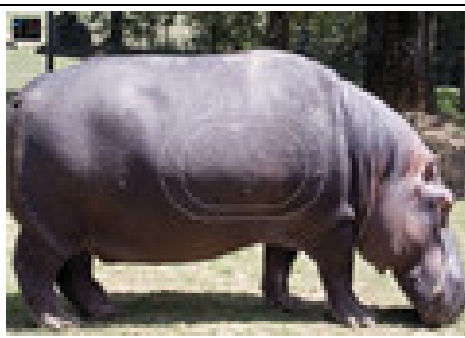
Hippopotame



Hippopotame



Hippopotame



Hippopotame



Hippopotame



Lion



Lion



Lion



Lion



Oryx



Ours blanc



Ours blanc



Ours blanc



Ours blanc



Ours brun



Ours brun



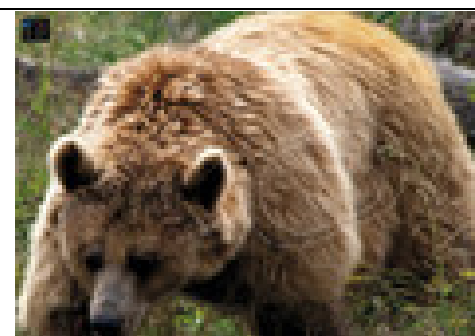
Ours brun



Ours brun



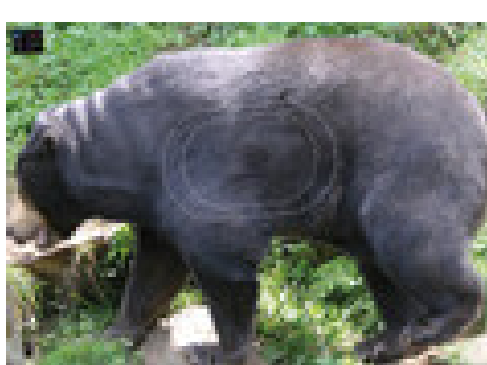
Ours brun



Ours brun



Ours Malais



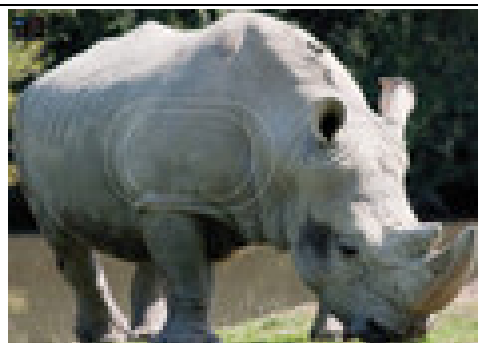
Ours Malais



Rhinocéros



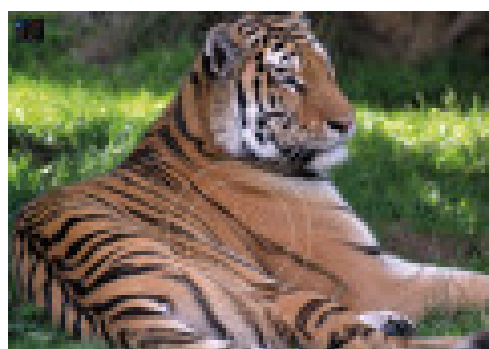
Rhinocéros



Rhinocéros



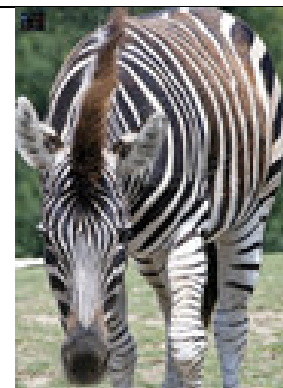
Rhinocéros



Tigre



Yack



Zèbre

AVENTURE



Ours brun

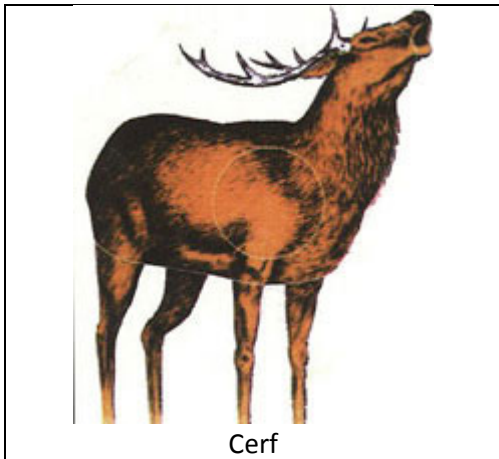


Rhinocéros



Sanglier

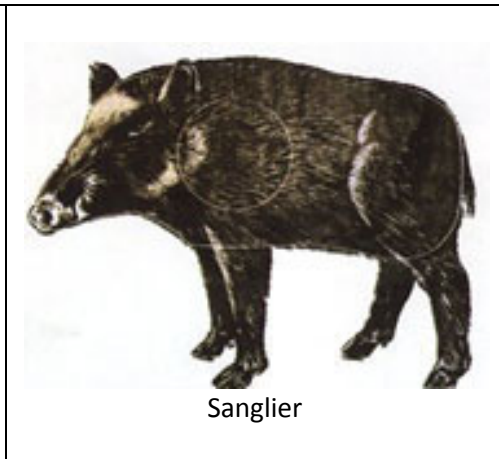
BJORN



Cerf

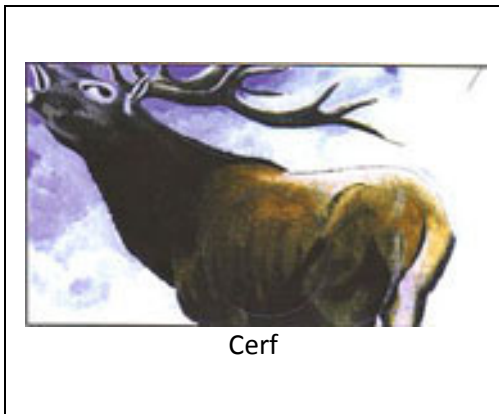


Ours

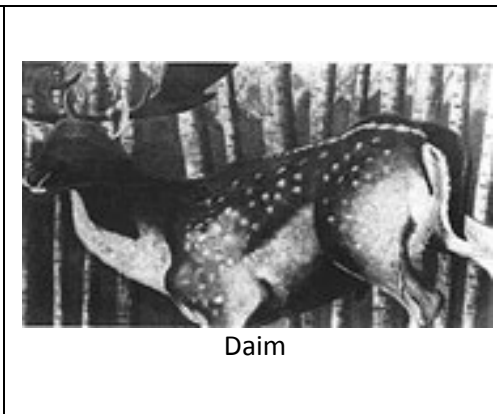


Sanglier

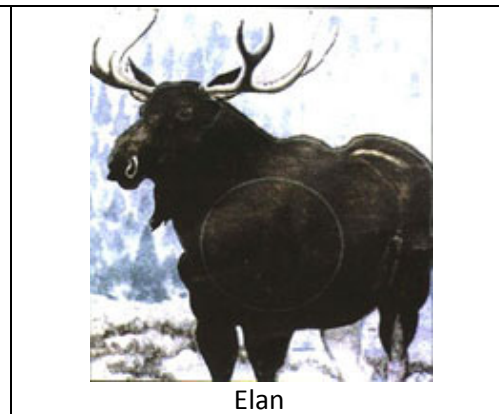
CAP HORN



Cerf

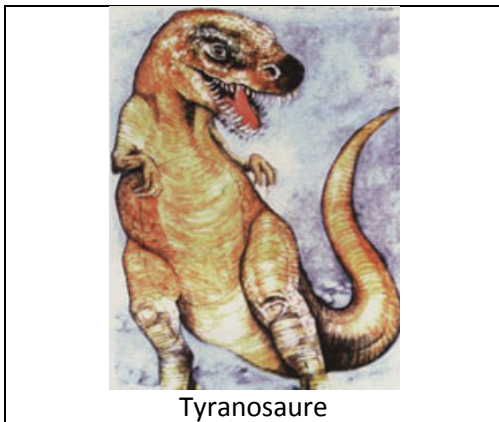


Daim



Elan

LANGUEDOC



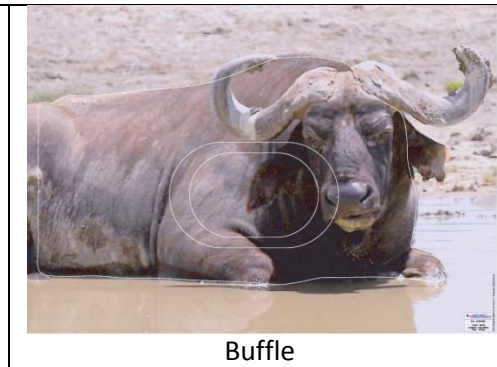
Tyranosau



LCC



Bison



Buffle



Cerf tacheté



Lion



Ours



Rhinocéros



Zèbre

MARTIN



Mouflon

NORMANDIE ARCHERIE



Bison d'Amérique



Chameau de Bactriane



Eléphant des savanes



Girafe



Gorille



Lionne debout



Rhinocéros blanc



Zèbre de Grant

OLYMPE



Ours



Lion



Tigre

83 blasons